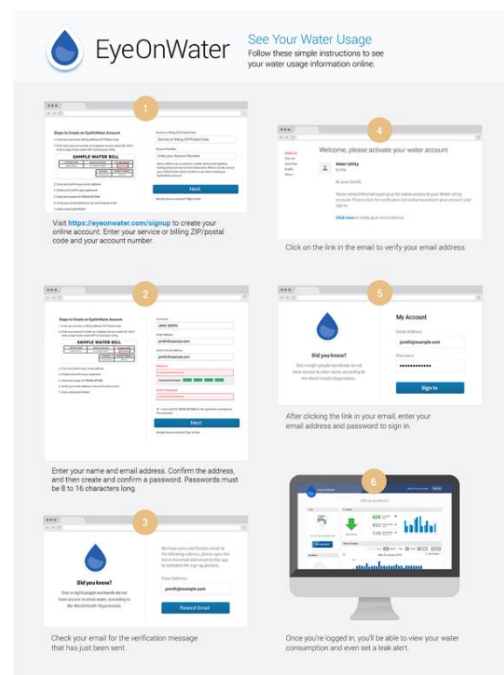


Information Memorandum  
7/16/2021

**1. Public Works**

Cellular Water Meter Replacement & Advanced Metering Infrastructure (AMI) Project

The City’s existing water services are metered, with a little over 9,000 water meters in varying sizes, with the majority being residential ¾” meters. Currently, the Water Meter Division within the Public Works Department reads the system monthly with a mobile reading system (AMR). The City’s goal is to migrate gradually to a fully automated cellular reading system allowing readings to be collected remotely. The new metering system offers a direct and secure access to the utility customer’s water use data through EyeOnWater. The EyeOnWater includes a secure website to review and analyze water usage patterns. With these tools, utility customers will be able to view hourly water usage activity and gain a greater understanding of the amount of water they use.



The plan to migrate from a radio read drive by meter reading system to a cellular read system will take several years to accomplish. The Water Meter Division’s plan is to install and replace approximately 1,100 water meters annually. To achieve this goal, starting this July, all new water services will receive a cellular read meter. New cellular meters will be installed in place of the older style meters as service requests are made for maintenance. The Water Department will send service requests to customers who currently have the oldest meters in the system. These can be identified by their serial number. Certain areas and subdivisions will also be targeted as the Meter Reading Technician identifies specific areas that are experiencing large failures of radios.

### Water Production – Outdoor Water Conservation

The City of Kalispell Public Works Department is requesting all Kalispell water users be conservative with their irrigation water practices. During the hot summer days, water conservation is important, and the City is requesting users follow one or more of the tips below:

- Make sure sprinkler heads are water thrifty.
- Adjust sprinklers so they only hit the lawn, not sidewalks, the porch, etc.
- Skip one or two lawn watering's a week.
- Scale back sprinklers' run time by 2-3 minutes.
- Sweep sidewalks instead of using a hose.
- Use water-efficient spray nozzles and get rubber washers to fix leaks.
- Use mulch or composting around plants to reduce the water they need.

## **2. Police Department**

Attached is the latest case report from the Police Department.

Chief Overman will speak at the Junior Police Leadership Academy Commencement at the Montana Law Enforcement Academy on July 17. The Montana Association of Chiefs of Police make it available at no cost to the youth of Montana. During the one-week program, students are introduced to law enforcement agencies from local, state and federal levels. There is a strong emphasis on developing leadership skills while giving students a glimpse of the criminal justice profession.

Members of the Major Crime Unit attended the Advanced Crime Scene course hosted by the Kalispell Police Department in Kalispell. This 40-hour course is designed to familiarize intermediate to advanced level police personnel with the technical skills needed to identify, document, preserve and collect more complicated physical evidence found at crime scenes.

The Kalispell area has experienced a recent uptick in Catalytic Convertor thefts. The thefts have typically been at car dealerships or "sell your own" business's here in town. The incidents remain under investigation.

## **3. Planning Department**

The Planning Board held a public hearing on July 13 and heard three application requests. The application requests consisted of the following:

1. Files #KPUD-21-01; and KPP-21-02 (continued from previous meeting) – A request from Bison Hill, LLC for the Mountain View Planned Unit Development ("PUD"), which is a Residential PUD overlay on approximately 139 acres of land

abutting the north side of Foys Lake Road to the west of the Highway 93 Bypass, along with major preliminary plat approval for Phase 1 of the development. The property was previously annexed with a PUD overlay called Willow Creek, which has since expired. This proposal is for a new PUD by a different applicant. The PUD calls for a total of 407 dwelling units (225 single family lots, 16 cottage lots and 166 townhome lots) along with approximately 49.1 acres of open space and park area. The Phase 1 preliminary plat consists of approximately 21.2 acres with 94 lots (5 single family lots and 89 townhome lots), streets and open space.

2. File #KPP-21-05 – A request from Meadows Edge, LLC for major preliminary plat approval for Meadows Edge Phases 3 and 4. The property is located within an R-3 (Residential) zoning district with a Planned Unit Development overlay, with a total of 125 dwelling units (Phase 3 contains 31 single-family lots and Phase 4 contains 21 single-family lots and 73 townhome lots) on approximately 54.91 acres of land including the lots, streets, and common area. The property is located at 1120 Farm to Market Road.
3. KGPA-21-02 – A request from the City of Kalispell to amend the Kalispell Growth Policy Plan-it 2035 by adopting the MOVE 2040 Kalispell Area Transportation Plan. The Kalispell Growth Policy Plan-It 2035 identified updating the 2008 Kalispell Transportation Plan as a key project. Accordingly, the City of Kalispell and the Montana Department of Transportation initiated the planning process for an updated plan mid-September 2019. The MOVE 2040 Kalispell Area Transportation Plan will serve to update and replace the existing Kalispell Transportation Plan. The transportation plan will help guide the development of the urban transportation system in a comprehensive and methodical fashion. The Transportation Plan includes the urban boundary determined by MDT, the Census Defined Place of Evergreen and additional growth areas outside of the urban boundary. It provides an analysis of existing transportation conditions, transportation demand forecasting, a discussion of alternative travel modes within the area and identification of specific problem areas relative to crash occurrences, intersection capacities, and street corridor capacities. The plan also includes recommendations for travel demand management and provides a series of recommendations for improvements to the transportation system including short term management changes, major street system improvements and miscellaneous upgrades to the existing transportation system. The transportation plan also includes a chapter designated towards bicycle and pedestrian system analysis and recommendations. The plan concludes with funding programs and policy plan.

The Board recommended approval of the three application requests. The recommendations will be forwarded onto the Council for their consideration at their August 2 meeting.

#### **4. Building Department**

In the last 2 weeks, we have issued permits for 8 single-family homes, 2 townhomes and 1 duplex. That will bring the total of new single-family/duplex and townhouse units for

the year to 137, compared to 118 last year at this time.

There have been 254 multi-family housing units issued so far this year. Last year at this time we had not issued any multi-family housing permits.

There was a total of 135 combined building and/or fire inspections completed in the last 2 weeks.

Residential – 70	Plumbing – 24
Commercial – 12	Mechanical - 13
Electrical – 11	Fire - 5

## **5. Community Development**

The Foys Lake Section of the Kalispell By-Pass is making progress with the majority of construction expected to be completed by the end of 2021 with crews returning in Spring of 2022 for final work. The Montana Department of Transportation (MDT) and LHC Construction are holding virtual public meetings on the second Thursday of each month at 6 pm to answer questions about the Foys Lake Road Interchange construction. Information can be found at:

<https://www.mdt.mt.gov/pubinvolve/kalispellbypass/>

LHC and its subcontractors continue to work on punch list items to finalize the South Kalispell TIF Traffic Improvement Project. Work is expected to continue through August 2021.

## **6. Parks and Recreation**

Forestry, with the help of volunteers, are watering trees around the community five days a week due to the lack of natural moisture. Every newly planted tree receives 20 gallons of water each week. The Urban Forestry committee is planning a tree walk/tour of Woodland Park trees for July 22, at 7:00 pm.

Park staff have been catching up on smaller projects outside of their typical seasonal duties. Items such as the wood parking delineators at Woodland Park are being repaired, and the sides of the ADA ramp into the adjacent turf at Lawrence Park are being tapered to make the transition more user friendly.

The user groups at KYAC have finished their summer seasons. Our field staff will use this time to rest the turf and perform seasonal maintenance, fix irrigation, fertilize, and aerate fields in anticipation of fall sports.

Public Works recently repaired 120' of asphalt along the loop road in Woodland Park as well as filled several potholes that had developed.

Kalispell Parks & Recreation and the Glacier Raft Company have partnered again this summer to give the Kalispell community a great opportunity to try a half-day rafting experience at a reduced rate. We had 55 people participate in our first rafting experience on Saturday, July 10. We have one more opportunity for the community to participate on Saturday, August 7.



We had 16 campers participate in our Skateboarding Camp. This camp is designed for boys and girls (ages 7+) of all ability levels. The camp was so popular last summer that we doubled the number of weeks offered from two weeks to four. We have limited availability in the remaining sessions July 19-22, August 9-12, and August 16-19.

We are expecting a large turnout for our annual summer cheerleading camp at Lawrence Park, July 26-30. We have over 40 participants currently registered for the program. Participants will learn new skills and cheers all week and then show their skills with a final performance for friends and family at the end of the week. Special thanks to the members of the Glacier High School cheerleading squad who help with this camp every year.

