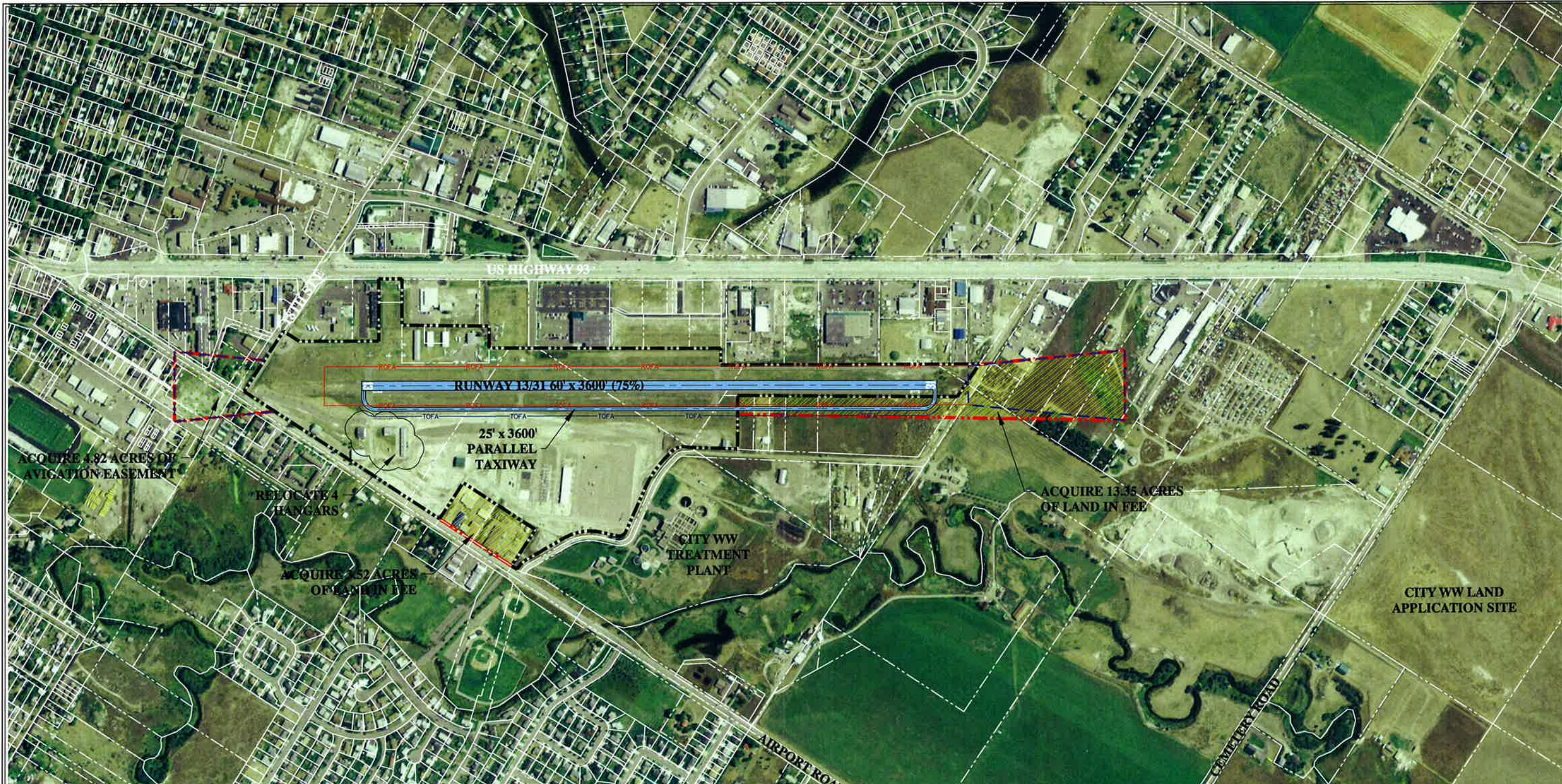


ESTIMATED DEVELOPMENT COST - SITE 1, OPTION D

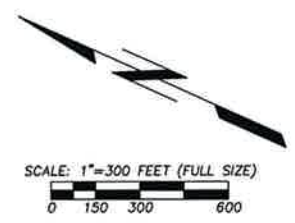
Kalspell Airport Master Plan Update

March, 2012

Item	Description of Pay Items	Unit	Unit Price	Qty	Total Cost
1	Land Acquisition				
	Land Acquisition	LS	\$ 1,700,000	1	\$ 1,700,000
	Remove Structures (Hangars & Shops)	LS	\$ 30,000	1	\$ 30,000
	Subtotal				\$ 1,730,000
2	Obstruction Clearing				
	Lower/Remove Trees	LS	\$ 20,000	1	\$ 20,000
	Subtotal				\$ 20,000
3	Rehabilitate 60' x 3,600 LF Runway 13/31				
	Earthwork	CY	\$ 12	1,200	\$ 14,400
	Mill Existing Pavement (2")	SY	\$ 4	24,000	\$ 96,000
	Bituminous Surface Course (2" Overlay)	TN	\$ 40	2,835	\$ 113,400
	Bituminous Material	TN	\$ 900	184.3	\$ 165,870
	Bituminous Tack Coat	TN	\$ 900	35.0	\$ 31,500
	Replace MIRL Lighting System	LS	\$ 150,000	1	\$ 150,000
	Runway Striping and Marking	SF	\$ 5	14,048	\$ 70,240
	Signing	EA	\$ 2,500	5	\$ 12,500
	Erosion Control & Seeding	LS	\$ 1,200	1	\$ 1,200
	Subtotal				\$ 655,110
4	Reconstruct 35' Wide Parallel Taxiway				
	Earthwork	CY	\$ 12	3,100	\$ 37,200
	Mill Existing Pavement (2")	SY	\$ 4	10,694	\$ 42,778
	Crushed Base Course (10")	CY	\$ 35	3,000	\$ 105,000
	Bituminous Surface Course (3")	TN	\$ 40	1,900	\$ 76,000
	Bituminous Material	TN	\$ 900	130	\$ 117,000
	Bituminous Prime Coat	TN	\$ 900	18	\$ 16,042
	Taxiway Striping and Marking	SF	\$ 5	2,257	\$ 11,285
	Taxiway Markers	EA	\$ 350	86	\$ 30,100
	Storm Drain & Culverts	LS	\$ 15,000	1	\$ 15,000
	Erosion Control & Seeding	LS	\$ 5,000	1	\$ 5,000
	Subtotal				\$ 455,404
Summary of Site 1, Option D Development Costs					
	Subtotal of Site 1, Option D Development Costs				\$ 2,860,514
	Engineering, Bidding, and Construction Administration (12.5%)				\$ 357,564
	Contingency (20%)				\$ 572,103
	Total Development Cost - Site 1, Option D				\$ 3,790,200
	Federal Share of Site 1, Option D (0%)				\$ -
	Local Share of Site 1, Option D (100%)				\$ 3,790,200



- LEGEND**
- EXISTING AIRPORT BOUNDARY
 - .-.- PROPOSED AIRPORT BOUNDARY
 - RUNWAY PROTECTION ZONE
 - BASE DEVELOPMENT- RUNWAY, TAXIWAY, APRON, & HANGAR AREAS ARC: B-II; 75% LENGTH= 3600'
 - AVIGATION EASEMENT
 - LAND TO BE ACQUIRED



REV'D	DATE	DESCRIPTION	DWN.	CHK'D	APPR.
KALISPELL CITY AIRPORT <small>FLATHEAD COUNTY KALISPELL, MONTANA</small>					SHEET NO. B
SITE 1, OPTION D					
FILE NO. DRAWN BY: RCB	CHK'D BY: JJW	PROJECT NO.: 0043	DATE: 04/04/12		