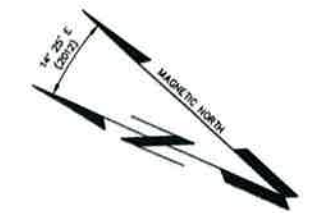
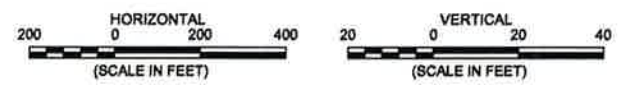


USGS AERIAL PHOTOGRAPH (DNRC)
PHOTO DATE: AUGUST 2009

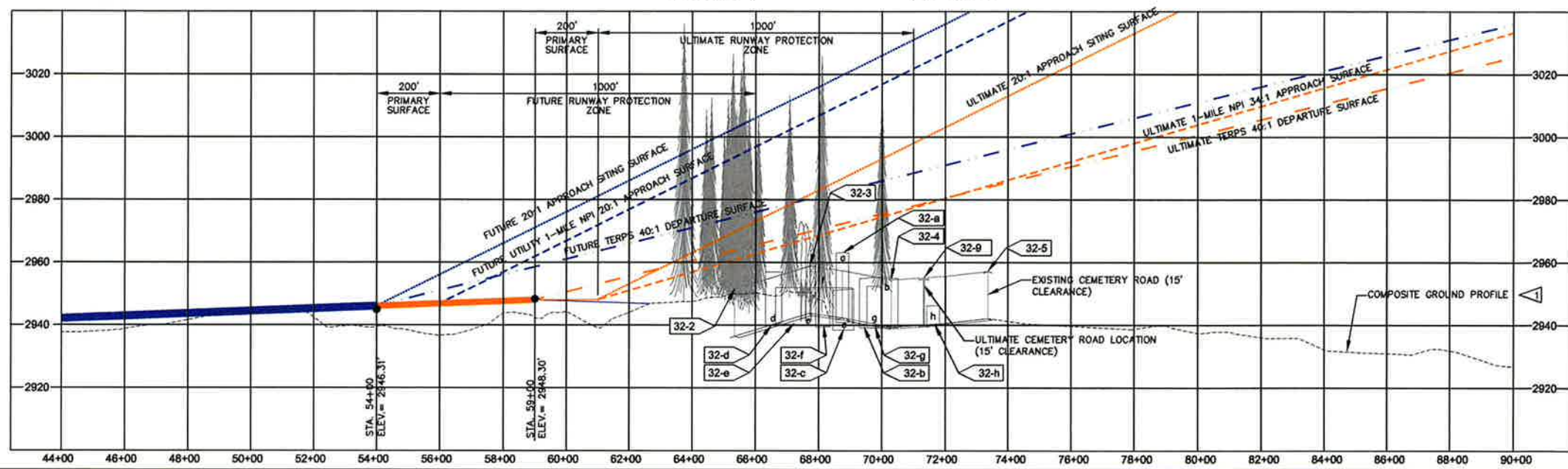


- NOTES:**
- EXISTING COMPOSITE GROUND DERIVED FROM SURVEYS BY ROBERT PECCIA & ASSOCIATES AND SANDS SURVEYING, NA083(1999), NAVD88.
 - STRUCTURES WITHIN THE ULTIMATE RUNWAY PROTECTION ZONE TO BE REMOVED.
 - EXISTING FEATURES TO BE REMOVED PRIOR TO FUTURE CONSTRUCTION (BUILDINGS #46, #47, #48, #49, #50, TREES, UTILITY POLES, ETC.)

RUNWAY 32 (FUTURE AND ULTIMATE)



ID	OBJECT	OBJECT ELEVATION		APPROACH/DEPARTURE SURFACE ELEVATION			MAX. CLEAR. OR OPEN.	DISPOSITION
		GROUND	PEAK	APPROACH SURFACE 20:1 UT.	DEPARTURE SURFACE 40:1 UT.	DEPARTURE SURFACE 40:1 UT.		
32-1	ROAD (W/15' TALL VEHICLE)	2948.7	2954.7	2994.3			37.7	NONE
32-2	ROAD (W/15' TALL VEHICLE)	2938.0	2951.0		2985.2		34.2	NONE
32-3	ROAD (W/15' TALL VEHICLE)	2944.0	2959.0	3027.6	2997.6		38.6	NONE
32-4	ROAD (W/15' TALL VEHICLE)	2935.5	2954.5	3040.6	3005.3		50.8	NONE
32-5	ROAD (W/15' TALL VEHICLE)	2940.1	2955.1	3056.3			101.2	NONE
32-6	ROAD (W/15' TALL VEHICLE)	2938.7	2953.7			NPI	16.8	NONE
32-7	ROAD (W/15' TALL VEHICLE)	2941.3	2956.3	3055.3			21.5	NONE
32-8	ROAD (W/15' TALL VEHICLE)	2940.1	2955.1		2979.7		24.0	NONE
32-9	ROAD (W/15' TALL VEHICLE)	2938.7	2951.7		2976.7		27.0	NONE
32-10	ROAD (W/15' TALL VEHICLE)	2941.0	2956.0		2982.2		26.1	NONE
32-11	ROAD (W/15' TALL VEHICLE)	2935.8	2950.8			2988.8	36.0	NONE
32-a	BUILDING 60	2941.0	2963.5		3033.1		69.6	NONE
32-b	BUILDING 59	2938.8	2951.9		3032.1		80.2	NONE
32-c	BUILDING 58	2939.0	2955.6		3038.9		83.3	NONE
32-d	BUILDING 53	2940.0	2957.2			2966.5	3016.2	9.3
32-e	BUILDING 54	2940.6	2952.3			2967.7	3003.9	15.5
32-f	BUILDING 55	2939.8	2959.6			2970.6	2993.7	11.0
32-g	BUILDING 56	2939.3	2952.7	3037.0	2991.5	2974.7		21.9
32-h	BUILDING 57	2940.2	2946.5	3046.5	2979.0	2979.4		32.5



DRAFT ALP HAS NOT BEEN APPROVED BY FAA AND IS SUBJECT TO CHANGE

REV'D	DATE	DESCRIPTION	DWN.	CHK'D	APPR.
SE Stelling Engineers, Inc.					
KALISPELL CITY AIRPORT FLATHEAD COUNTY KALISPELL, MONTANA					SHEET NO. 8
INNER PORTION OF APPROACH RUNWAY 32					DRAFT
FILE NO.:	MJB	CHK'D BY:	JJW	PROJECT NO.:	0043
DRAWN BY:				DATE:	04/04/12

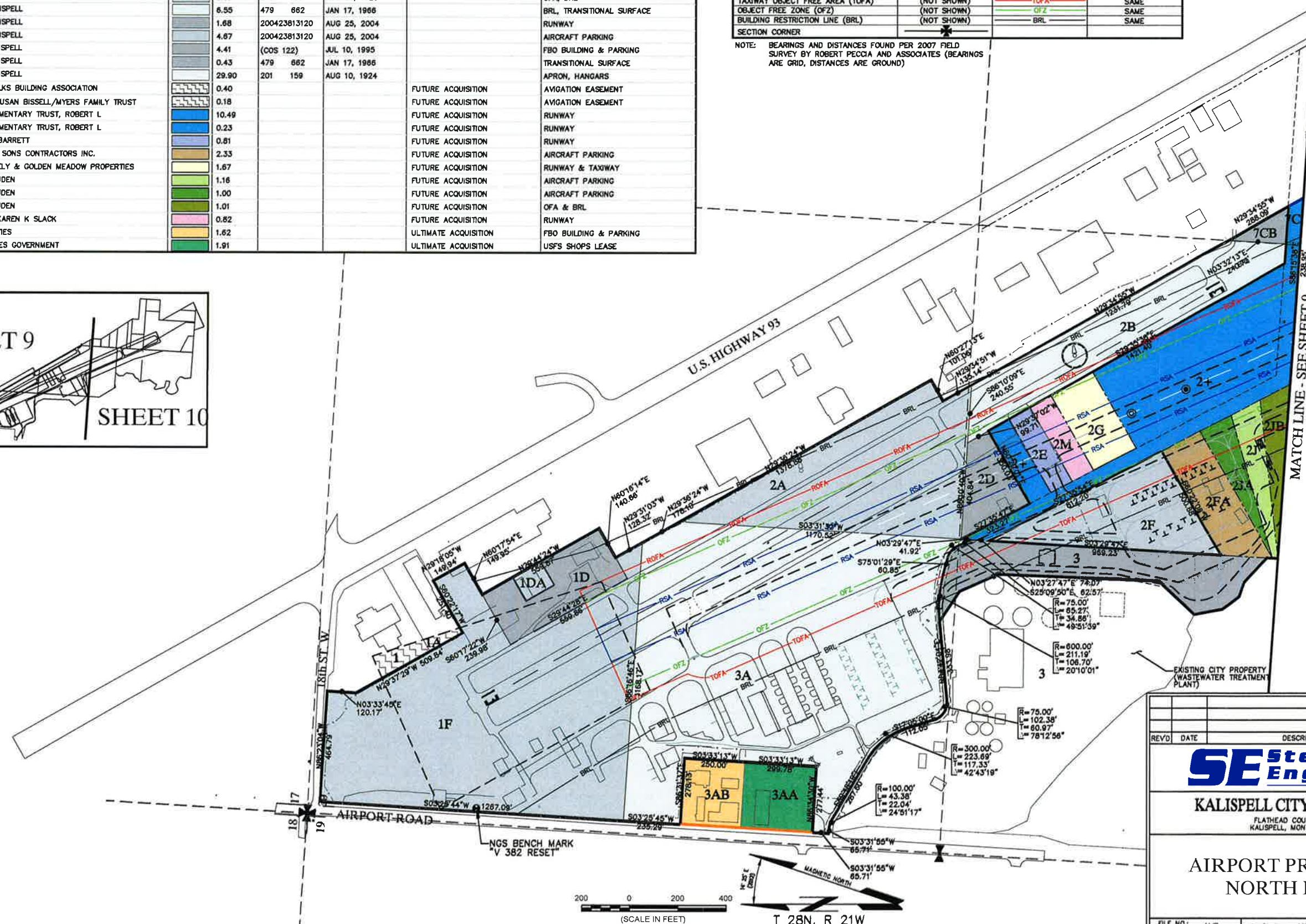
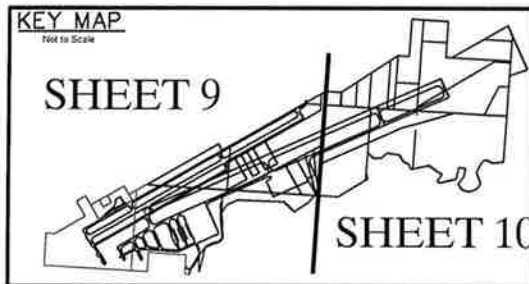
E:\0043 - Kalispell City\003-2010\Drawings\ALP\0043-07-08.dwg Mar 26, 2012

AIRPORT PROPERTY LEGEND

TRACT NO.	OWNER	LEGEND	ACREAGE	BOOK OR DOC. NO.	PAGE OR DOC. NO.	DATE ACQUIRED	PARTICIPATING PROJECT NO.	PURPOSE OF ACQUISITION
SECTION 20, T28N, R21W								
1D	CITY OF KALISPELL		2.73	200526216200		SEP 19 2005		RPZ, APPROACH PROTECTION
1DA	CITY OF KALISPELL		0.35	200526216200		SEP 19, 2005		
1F	CITY OF KALISPELL		22.36	200 135		JUL 24, 1924		RPZ, APPROACH PROTECTION
2A	CITY OF KALISPELL		9.91	201 156		AUG 06, 1928		OFA, BRL
2B	CITY OF KALISPELL		6.55	479 662		JAN 17, 1966		BRL, TRANSITIONAL SURFACE
2D	CITY OF KALISPELL		1.68	200423813120		AUG 25, 2004		RUNWAY
2F	CITY OF KALISPELL		4.87	200423813120		AUG 25, 2004		AIRCRAFT PARKING
3	CITY OF KALISPELL		4.41	(COS 122)		JUL 10, 1995		FBO BUILDING & PARKING
7CB	CITY OF KALISPELL		0.43	479 662		JAN 17, 1966		TRANSITIONAL SURFACE
3A	CITY OF KALISPELL		29.90	201 159		AUG 10, 1924		APRON, HANGARS
1	KALISPELL ELKS BUILDING ASSOCIATION		0.40				FUTURE ACQUISITION	AVIGATION EASEMENT
1A	GILBERT & SUSAN BISSELL/MYERS FAMILY TRUST		0.18				FUTURE ACQUISITION	AVIGATION EASEMENT
2+	MONK TESTAMENTARY TRUST, ROBERT L		10.49				FUTURE ACQUISITION	RUNWAY
7C	MONK TESTAMENTARY TRUST, ROBERT L		0.23				FUTURE ACQUISITION	RUNWAY
2E	MICHAEL S. BARRETT		0.81				FUTURE ACQUISITION	RUNWAY
2FA	SCHLEGEL & SONS CONTRACTORS INC.		2.33				FUTURE ACQUISITION	AIRCRAFT PARKING
2G	PETER FENNELY & GOLDEN MEADOW PROPERTIES		1.67				FUTURE ACQUISITION	RUNWAY & TAXIWAY
2J	HUGH R. LOUDEN		1.16				FUTURE ACQUISITION	AIRCRAFT PARKING
2JA	HUGH R. LOUDEN		1.00				FUTURE ACQUISITION	AIRCRAFT PARKING
1JB	HUGH R. LOUDEN		1.01				FUTURE ACQUISITION	OFA & BRL
2M	JERRY L & KAREN K SLACK		0.82				FUTURE ACQUISITION	RUNWAY
3AB	RJT PROPERTIES		1.62				ULTIMATE ACQUISITION	FBO BUILDING & PARKING
3AA	UNITED STATES GOVERNMENT		1.91				ULTIMATE ACQUISITION	USFS SHOPS LEASE

DESCRIPTION	EXISTING	FUTURE	ULTIMATE
AIRCRAFT PAVEMENT	=====	=====	SAME
PAVED ROAD	=====	=====	SAME
GRAVEL ROAD	=====	=====	SAME
AIRPORT PROPERTY LINE	=====	=====	SAME
BUILDINGS / STRUCTURES	=====	(NOT SHOWN)	SAME
RUNWAY PROTECTION ZONE (RPZ)	(NOT SHOWN)	(NOT SHOWN)	SAME
RUNWAY OBJECT FREE AREA (ROFA)	(NOT SHOWN)	-----	SAME
RUNWAY/TAXIWAY SAFETY AREA (RSA)	(NOT SHOWN)	-----	SAME
TAXIWAY OBJECT FREE AREA (TOFA)	(NOT SHOWN)	-----	SAME
OBJECT FREE ZONE (OFZ)	(NOT SHOWN)	-----	SAME
BUILDING RESTRICTION LINE (BRL)	(NOT SHOWN)	-----	SAME
SECTION CORNER	+		

NOTE: BEARINGS AND DISTANCES FOUND PER 2007 FIELD SURVEY BY ROBERT PECCIA AND ASSOCIATES (BEARINGS ARE GRID, DISTANCES ARE GROUND)



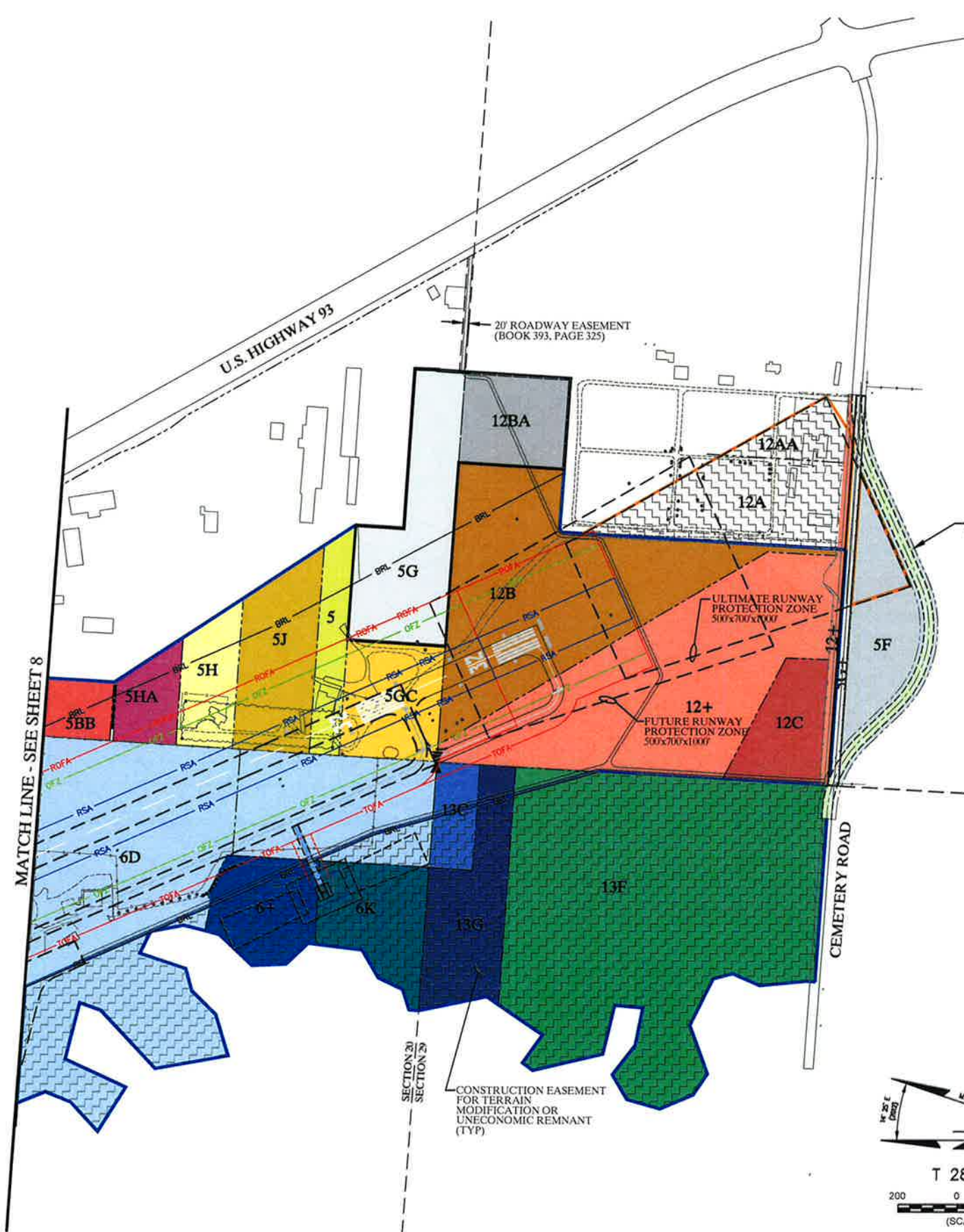
DRAFT ALP HAS NOT BEEN APPROVED BY FAA AND IS SUBJECT TO CHANGE

REV'D	DATE	DESCRIPTION	DWN.	CHK'D	APPR.
SE Stelling Engineers, Inc.					
KALISPELL CITY AIRPORT FLATHEAD COUNTY KALISPELL, MONTANA					SHEET NO. 9
AIRPORT PROPERTY NORTH HALF					
FILE NO.:	MJB	CHK'D BY:	JJW	PROJECT NO.:	0043
DRAWN BY:				DATE:	04/04/12



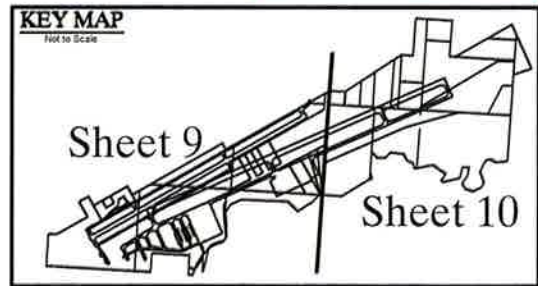
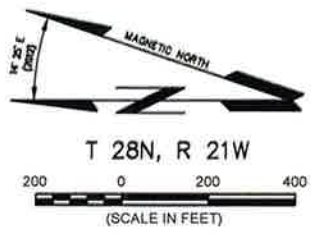
E:\20043 - Kalispell City Airport - 2007 Survey - ALP\20043-09-10.dwg Mar 30, 2012

AIRPORT PROPERTY LEGEND							
TRACT NO.	OWNER	LEGEND	ACREAGE	BOOK OR DOC. NO.	PAGE	DATE ACQUIRED	PARTICIPATING PROJECT NO. / PURPOSE OF ACQUISITION
SECTION 20, T28N, R21W							
5G	CITY OF KALISPELL	[Color]	5.03	404	266	AUG 23, 1957	RPZ, ULT. DEVELOPMENT
5	SEILER FAMILY TRUST	[Color]	1.71				FUTURE ACQUISITION / RPZ, ULT. RUNWAY 32
5BB	DOUGLAS M. & DONNA MILLER	[Color]	1.00				FUTURE ACQUISITION / OFA
5GC	SEILER FAMILY TRUST	[Color]	2.98				FUTURE ACQUISITION / RPZ, ULT. RUNWAY 32
5H	SEILER FAMILY TRUST	[Color]	1.94				FUTURE ACQUISITION / OFA
5HA	R & R DEVELOPMENT	[Color]	1.43				FUTURE ACQUISITION / OFA
5J	SEILER FAMILY TRUST	[Color]	3.68				FUTURE ACQUISITION / FUT./ULT. RUNWAY 32
6+	HILDA WISE	[Color]	0.65				FUTURE ACQUISITION / BRL, FUT. OFA
6+	HILDA WISE	[Color]	2.04				FUTURE ACQUISITION / UNECONOMIC REMNANT
6K	JUSTIN HOEHN	[Color]	2.98				FUTURE ACQUISITION / UNECONOMIC REMNANT
6D	RANDY AND DEBRA WISE	[Color]	10.30				FUTURE ACQUISITION / RUNWAY 32
6D	RANDY AND DEBRA WISE	[Color]	8.60				FUTURE ACQUISITION / UNECONOMIC REMNANT
SECTION 29, T28N, R21W							
5F	CITY OF KALISPELL	[Color]	4.83	733	69	SEP 15, 1981	ULT. RPZ, ROAD RELOCATION
5G+	CITY OF KALISPELL	[Color]	0.68			AUG 23, 1957	ROAD RELOCATION
12BA	CITY OF KALISPELL	[Color]	2.48	404	266	AUG 23, 1957	ULT. DEVELOPMENT
12+	FLATHEAD COUNTY	[Color]	12.71				FUTURE ACQUISITION / ULT. RPZ
12A	GLACIER MEMORIAL CEMETARY	[Color]	4.27				FUTURE ACQUISITION / AVIGATION EASEMENT
12AA	GLACIER MEMORIAL CEMETARY	[Color]	1.08				FUTURE ACQUISITION / AVIGATION EASEMENT
12B	SEILER FAMILY TRUST	[Color]	11.14				FUTURE ACQUISITION / RPZ, ULT. RUNWAY 32
12C	FLATHEAD COUNTY	[Color]	2.27				FUTURE ACQUISITION / APPROACH PROTECTION
13C	RANDY AND DEBRA WISE	[Color]	0.55				FUTURE ACQUISITION / BRL, ULT. OFA
13C	RANDY AND DEBRA WISE	[Color]	0.85				FUTURE ACQUISITION / UNECONOMIC REMNANT
13F	DAVID WISE	[Color]	0.30				FUTURE ACQUISITION / RPZ, ULT. OFA
13F	DAVID WISE	[Color]	20.81				FUTURE ACQUISITION / UNECONOMIC REMNANT
13G	JUSTIN HOEHN	[Color]	0.33				FUTURE ACQUISITION / RPZ, ULT. OFA
13G	JUSTIN HOEHN	[Color]	3.45				FUTURE ACQUISITION / UNECONOMIC REMNANT



DESCRIPTION	EXISTING	FUTURE	ULTIMATE
AIRCRAFT PAVEMENT	[Symbol]	[Symbol]	[Symbol]
PAVED ROAD	[Symbol]	[Symbol]	[Symbol]
GRAVEL ROAD	[Symbol]	[Symbol]	[Symbol]
AIRPORT PROPERTY LINE	[Symbol]	[Symbol]	[Symbol]
BUILDINGS / STRUCTURES	[Symbol]	(NOT SHOWN)	[Symbol]
RUNWAY PROTECTION ZONE (RPZ)	(NOT SHOWN)	[Symbol]	[Symbol]
RUNWAY OBJECT FREE AREA (ROFA)	(NOT SHOWN)	[Symbol]	[Symbol]
RUNWAY/TAXIWAY SAFETY AREA (RSA)	(NOT SHOWN)	[Symbol]	[Symbol]
TAXIWAY OBJECT FREE AREA (TOFA)	(NOT SHOWN)	[Symbol]	[Symbol]
OBJECT FREE ZONE (OFZ)	(NOT SHOWN)	[Symbol]	[Symbol]
BUILDING RESTRICTION LINE (BRL)	(NOT SHOWN)	[Symbol]	[Symbol]
SECTION CORNER	[Symbol]	[Symbol]	[Symbol]

DRAFT ALP HAS NOT BEEN APPROVED BY FAA AND IS SUBJECT TO CHANGE



REV'D	DATE	DESCRIPTION	DWN.	CHK'D	APPR.
KALISPELL CITY AIRPORT FLATHEAD COUNTY KALISPELL, MONTANA					SHEET NO. 10
AIRPORT PROPERTY SOUTH HALF					
FILE NO.:	MJB	CHK'D BY:	JJW	PROJECT NO.:	0043
DRAWN BY:				DATE:	04/04/12

20120403 - Kalispell City Airport - Airport Property Legend - South Half - 10 - 04/04/12