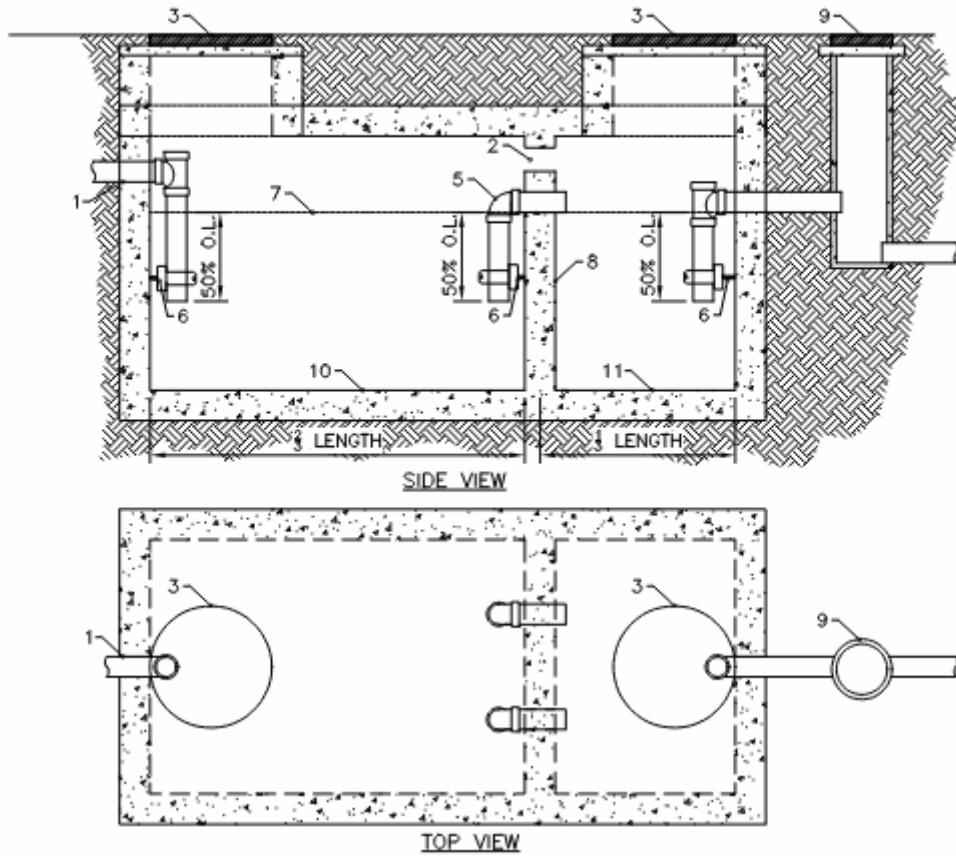


# Standard Details – Pretreatment



**NOTES:**

1. INLET PIPING—SHALL BE A MINIMUM OF 3" ABOVE OUTLET PIPING.
2. 6" DIAMETER VENT SLEEVE
3. MINIMUM 24" DIAMETER OPENING WITH RING AND LID. IF IN A TRAFFIC AREA, MUST MEET HS-20 LOADING REQUIREMENTS. CONCRETE LIDS ARE PROHIBITED.
4. ALL TEE PIPING SHALL EXTEND DOWN TO 50% OF THE OPERATING LEVEL.
5. ALL INTERIOR AND OUTLET PIPING SHALL BE THE SAME DIAMETER AS THE INLET PIPING.
6. PIPE SUPPORTS—SEE CK STANDARD DETAIL PT.7
7. OPERATING LEVEL
8. BAFFLE WALL—SHALL HAVE (2) OPENINGS OF THE SAME DIAMETER AS THE INLET AND OUTLET PIPING AND AT THE SAME INVERT AS THE OUTLET PIPING. THE OPENINGS SHALL BE STAGGERED TO PREVENT SHORT CIRCUITING BETWEEN THE INLET AND OUTLET PIPES.
9. SAMPLE PORT—TO BE DESIGNED PER CK STANDARD DETAIL PT.3 IF IN A TRAFFIC AREA, MUST MEET HS-20 LOADING REQUIREMENTS. SHALL DISCHARGE TO CITY'S SANITARY SEWER.
10. PRIMARY CHAMBER ( $\frac{2}{3}$  TOTAL VOLUME).
11. SECONDARY CHAMBER ( $\frac{1}{3}$  TOTAL VOLUME).
12. ALL UNDER SLAB AND SUBSURFACE CONSTRUCTION REQUIRES DRAWINGS FROM A PROFESSIONAL ENGINEER AND MUST BE APPROVED BY THE CITY OF KALISPELL PRIOR TO CONSTRUCTION.
13. SEE CHAPTER 7 OF THE DESIGN AND CONSTRUCTION STANDARDS FOR ADDITIONAL REQUIREMENTS

FOR MORE INFORMATION, CONTACT THE INDUSTRIAL PRETREATMENT COORDINATOR'S OFFICE AT 406-758-7817

PT.4 TYPICAL SAND, OIL AND GREASE SEPARATOR (SOG)  
N.T.S