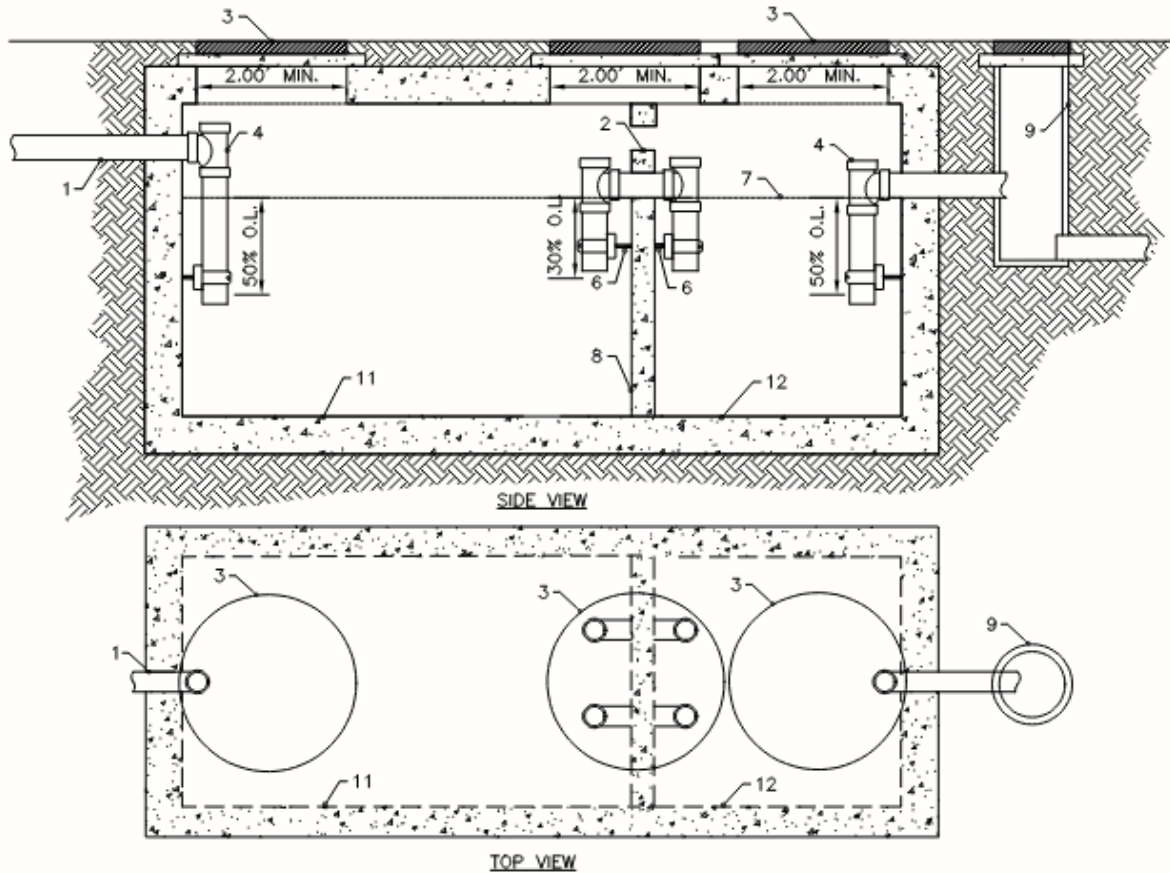


Standard Details – Pretreatment



NOTES:

1. INLET PIPING—SHALL BE A MINIMUM OF 3" ABOVE OUTLET PIPING
2. 6" DIAMETER VENT SLEEVE
3. MINIMUM 24" DIAMETER OPENING WITH RING AND LID. IF IN A TRAFFIC AREA, MUST MEET HS-20 LOADING REQUIREMENTS. CONCRETE LIDS ARE PROHIBITED.
4. INLET AND OUTLET PIPING SHALL EXTEND DOWN TO 50% OF THE OPERATING LEVEL. MINIMUM SIZE 4" DIAMETER.
5. ALL INTERIOR AND OUTLET PIPING SHALL BE THE SAME DIAMETER AS THE INLET PIPING.
6. SS SUPPORTS, SEE CK STANDARD DETAIL PT.7
7. OPERATING LEVEL
8. BAFFLE WALL
9. SAMPLE PORT—TO BE DESIGNED PER CK STANDARD DETAIL PT.3. IF IN A TRAFFIC AREA, MUST MEET HS-20 LOADING REQUIREMENTS. SHALL DISCHARGE TO CITY'S SANITARY SEWER
10. TOTAL TANK VOLUME TO BE SIZED TO 2,500 GALLONS
11. PRIMARY CHAMBER (2/3 TOTAL VOLUME)
12. SECONDARY CHAMBER (1/3 TOTAL VOLUME)
13. ALL UNDER SLAB AND SUBSURFACE CONSTRUCTION REQUIRES DRAWINGS FROM A PROFESSIONAL ENGINEER AND MUST BE APPROVED BY THE CITY OF KALISPELL PRIOR TO CONSTRUCTION.
14. SEE CHAPTER 7 OF THE DESIGN AND CONSTRUCTION STANDARDS FOR ADDITIONAL REQUIREMENTS

FOR MORE INFORMATION, CONTACT THE INDUSTRIAL PRETREATMENT COORDINATOR'S OFFICE
AT 406-758-7817

PT.6

SEPTIC TANK FOR RV DUMP STATIONS
N.T.S.